

St. James of Jerusalem Episcopal Church, Long Beach, NY

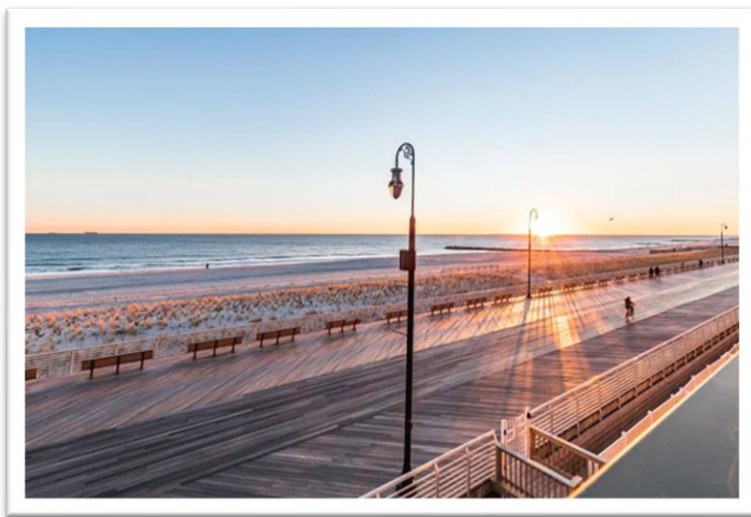
St. James of Jerusalem in Long Beach, NY, is located in the center of a barrier island on Long Island in New York State, Nassau County, about 21 miles from New York City. The island is surrounded by the Atlantic Ocean on the south and east, and Reynolds channel, a tidal strait, to the north. The city was incorporated in 1922.



In the 1800s, Long Beach was a summer destination for the New York City folks looking for a vacation by the cool ocean air and salt water. And no wonder. The barrier island community and its beach are about three miles long and a mile or less wide from east to west. Paralleling the beach is a two and a quarter mile boardwalk great for walking, running, or biking. The sunrises and sunsets are reliably beautiful and stunning as is the water

whether it is calm or with majestic waves pounding the shore.

Occasionally whales and dolphins can be seen feeding just offshore – everyday scenes that truly that inspire loving care of God's creation.



As the decades have passed, Long Beach has become a bedroom community for those commuting in New York City and Long Island. The population is about 39,000 all year around with a median household income of \$130,000.

Rents average about \$2,300/month, though about 64 percent of households own their homes, of which 80 percent are valued between \$300,000 and \$1 million. The neighborhoods in the city are tidy, well maintained, and well cared for.

Long Beach is a diverse community – 68% of the population is white with a heavy Irish (21%) and Italian (18%) influence, while 13% are Hispanic/Latino, 5% are Black/African American, and 3% are Asian. Besides Anglican, many other faiths are represented by the population including Catholic, Lutheran, Baptist, Evangelical and Jewish faiths.

Alive with activity all year round, Long Beach is a beach community with surfers riding the waves in all four seasons, an enormously popular Polar Bear Plunge in the winter and volley ball league in the summer, group walks and runners' races, and an artists' market on the plaza in front of City Hall, every weekend, from May through October and one of the region's most popular Farmers' Markets, twice a week, April to November.

St. James Church and her residence are located on a quiet residential street in the Historic Red Brick District with a wide park-like property that is well maintained, just steps from the boardwalk and ocean. The church property includes a large, beautiful garden and columbarium, which still has niches available for cremains. The grounds are open during the



day for prayer, meditation, and as a respite from the give-and-take of the day. Many, including members of St. James, regularly visit their deceased loved ones at the columbarium. On spring and summer Sundays, St. James holds outdoor Eucharist and, from time-to-time, Baptisms and weddings.

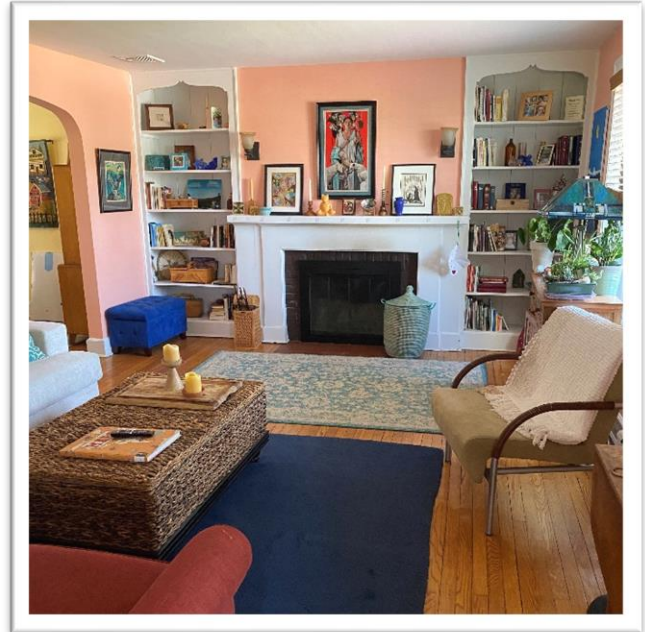


The church was built in 1935. St. James has a small indoor Sanctuary, capable of seating about 80 people. It is appointed with an elevated and spacious altar area, hardwood floors, wood paneling, significant natural lighting, an organ and well cared for wood pews. It has high loft ceilings. The impression when entering through the two large front doors is one of comfort, God's graciousness, and space clearly devoted to meeting with the

Almighty. The church also has an upstairs office, sacristy, and undercroft with a full kitchen, for fellowship.

The attached Rectory, built in 1938, is a roomy home with a great kitchen, separate dining area, spacious living room, and stairs that lead to three bedrooms upstairs - plenty of room for kids, grandkids, friends, and visitors who might want to take advantage of the beach. Both the Rectory and Sanctuary are well air-conditioned and comfortable whatever the season.

St. James has ties with the Long Beach community, and several other congregations in the neighborhood including the Lutheran and Catholic churches, the devout non-denominational New Life Church of Christ, and various Synagogues. All are within walking distance. There is a spirit of mutual respect and recognition interwoven in our quiet but strong relationships.



The City has a public school system that ranges from Pre-K through High School. As of 2019 the graduation rate was 95%. The church is also located within walking distance to great shopping at many locally owned boutiques, a terrific Public Library, post office, groceries, and UPS Store. Long Beach is bicycle-friendly and is home to great restaurants of virtually all cuisines, many of which also host live music in a walkable downtown and West End. If the car is easier, there is always plenty of public parking.

For travel into NYC, the Long Island Railroad is a short walk away. The trip takes about an hour. Traveling east from Long Beach there are wonderful destinations, such as planting gardens, museums, more beaches at the Hamptons, Orient Point and Montauk Point with ferries to Block Island, Rhode Island, and Connecticut. John F Kennedy International Airport is about 10 miles away with LaGuardia airport about 15 miles away. Uber, Lift, and taxi cabs are all readily available.

But why go anywhere? In 2022 Long Beach was named one of the best East Coast Towns for a summer getaway by Time Out Magazine.

Long Beach, New York – the city motto is “Civitas ad Mare” (City by the Sea).

Links to Local Resources

City of Long Beach, NY <https://www.longbeachny.gov/>

Long Beach Parks & Recreation <https://www.longbeachny.gov/rec>

Long Beach, NY School District <https://www.lbeach.org/>

Nassau County Parks, Preserves and Museums <https://www.nassaucountyny.gov/1796/Where-to-Go>