

**The Church, Rectory, Garden & Columbarium
at St. James of Jerusalem**
Long Beach, NY

June 7, 2024

Also see the links to Slideshows/Photo Albums

St. James of Jerusalem Church

Built in 1935, after years of operations in other locations in Long Beach, St. James Church is the oldest organization in the City of Long Beach, NY. It is a designated Long Beach Landmark, located within the Historic Red Brick District of the city. With a classic brick exterior and wood paneled interior, the church includes a sanctuary that accommodates up to 76 people and sacristy on the main level. Upstairs is an office, and downstairs is a spacious community room with a full kitchen where parish



coffee hours and numerous AA meetings are held each week. (See [Photo Album](#)) [[link to slideshow or folder](#)]

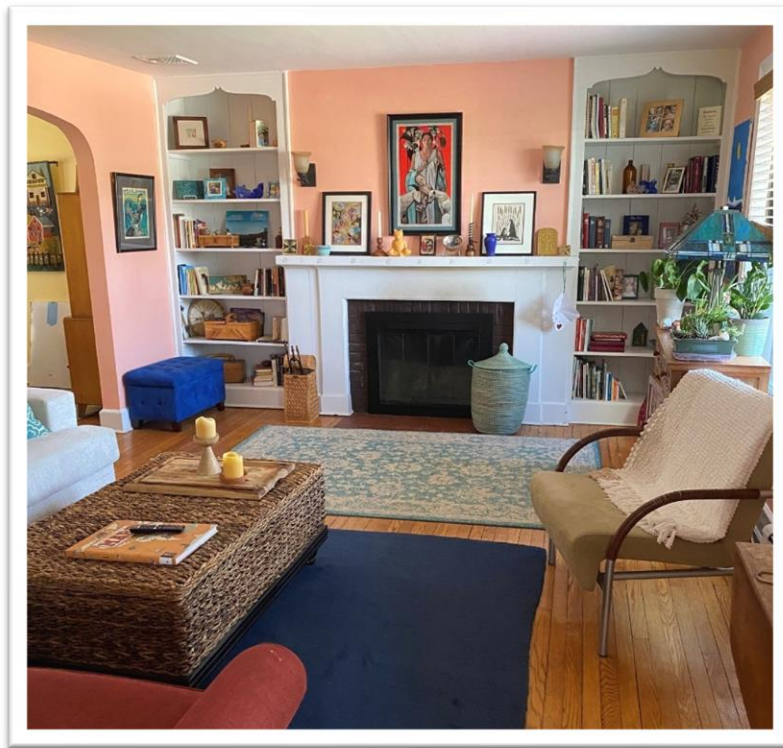
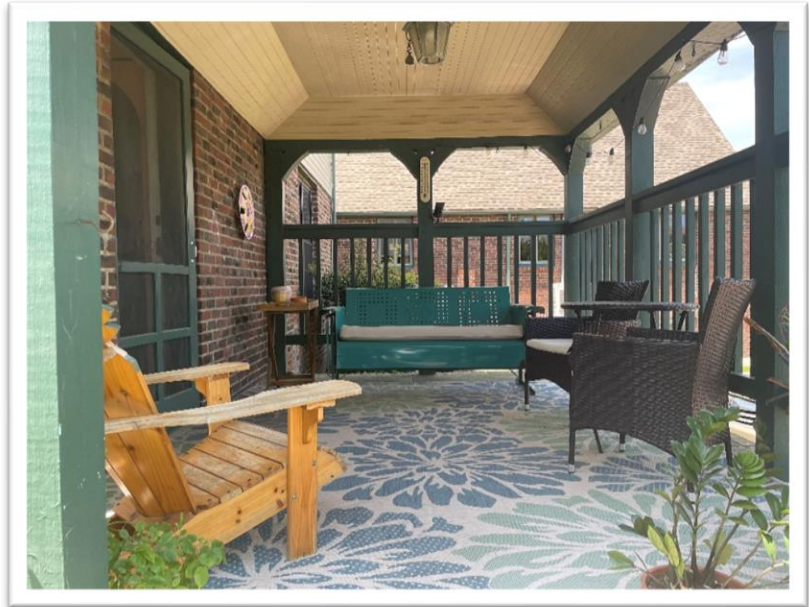


The church is home to many remarkable icons and artifacts including a baptismal font that was rescued from the deconsecrated Episcopal Church of the Holy Communion in New York City after it was deconsecrated in 1976. In the garden is a baptismal font made of an enormous clam shell purchased in 1973.

The Rectory at St. James of Jerusalem

Constructed in 1938, just three years after the church, the Rectory at St. James of Jerusalem is a classic brick and clapboard colonial home. The front entrance to the Rectory is surrounded by a front porch plenty of room for seating and gathering, overlooking the historic brick residential street and lush gardens.

The first floor includes a comfortable living room with wood burning fireplace and sundrenched dining room, both with hard wood floors, and a kitchen with clean white appliances and plenty of room for food prep, cooking and entertaining. A side door from the kitchen opens into the large, beautiful garden.



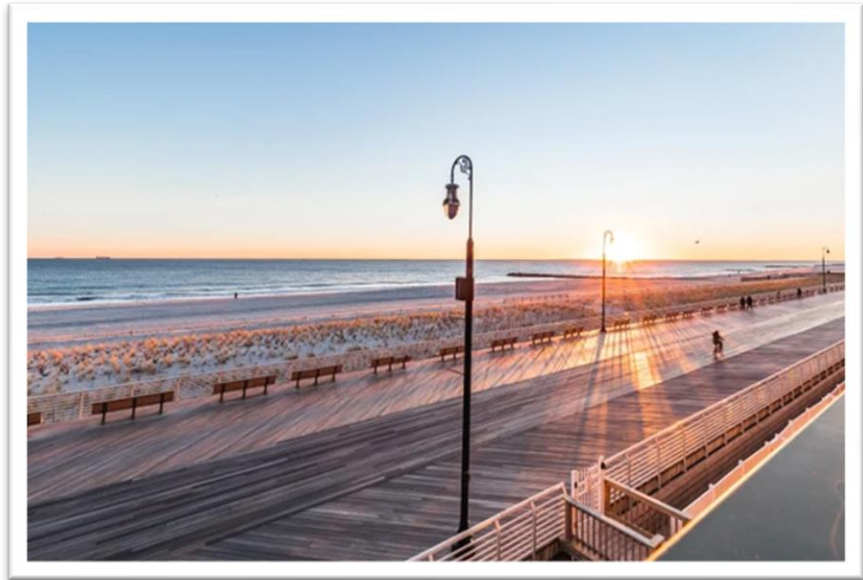
On the second floor, three bedrooms, a hallway and full bathroom make this home perfect for family and visitors.

The large back bedroom has two south-facing windows and a sitting area; the middle bedroom, with windows overlooking the brick road and church; and a small front bedroom, with windows to the street and garden. The classic full bath includes a pedestal sink, window, and a bathtub and shower.

The spacious basement includes a new washer and dryer and plenty of storage space.

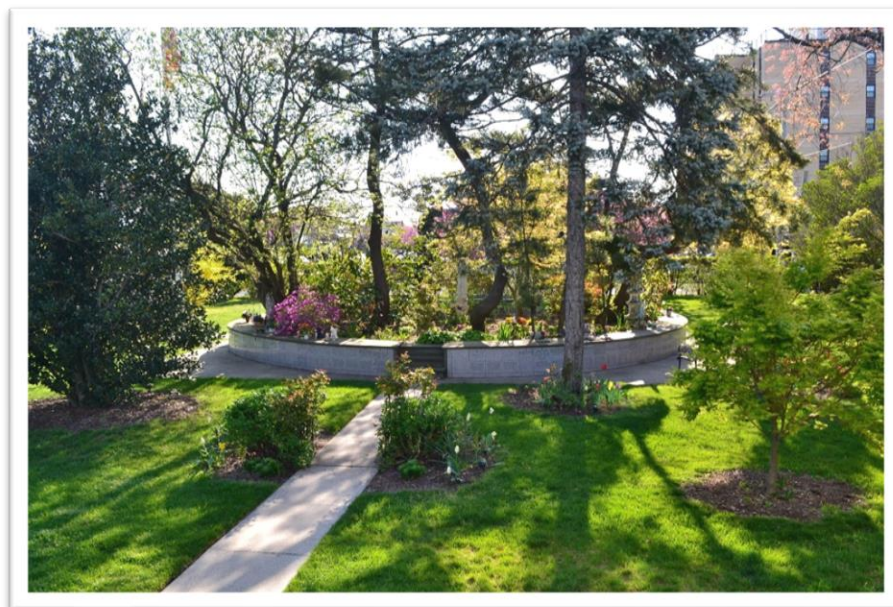
The Rectory was recently insulated to keep it toasty warm in the winter and cool in the summer.

It is just steps from the boardwalk and ocean beach, as well as a playground that was recently renovated and contains the latest fun and accessible equipment. A private driveway and bicycle rack in front ensures that you and your visitors always have a place to park. (See [Photo Album](#)) [*link to slideshow or folder*]

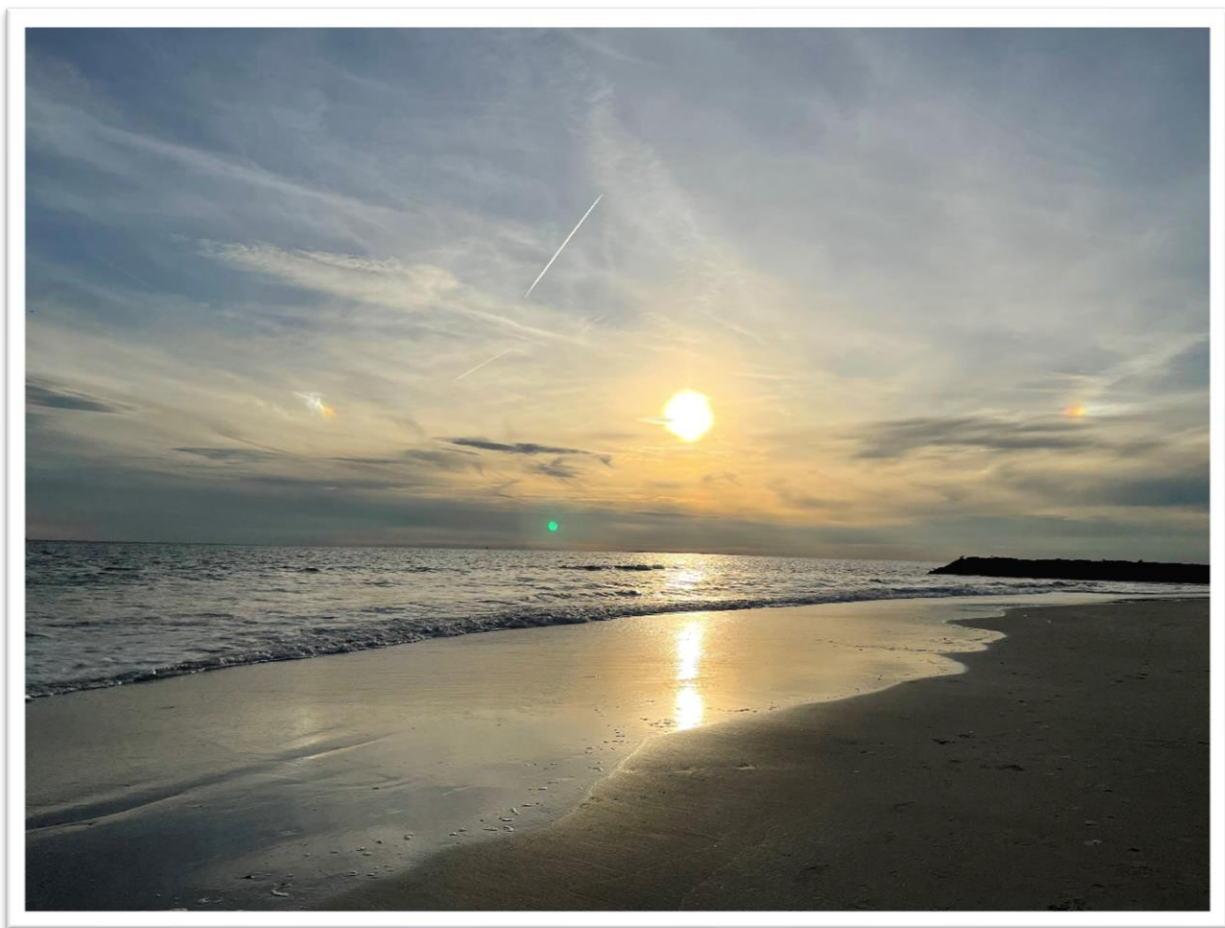


The Garden & Columbarium at St. James of Jerusalem

Because it was constructed on a double lot in Long Beach, NY, St. James of Jerusalem has the wonderful benefit of a large garden, which hosts outdoor worship, local community group meetings, especially AA, and a circular, granite columbarium and garden. Enclosed only by tall privet hedges, the garden is open to and appreciated by the local community, open daily, sunrise to sunset. Maintained with stewardship of our fragile planet in mind, no chemicals are used in its



care. Members of St. James participate in the care of the garden through period Garden Days, at which the old and the young don garden gloves and pick up rakes, clippers, and shears to keep the garden healthy and beautiful. (See [Photo Album](#)) [*link to slideshow or folder*]



Long Beach, New York